

**SRBIJA / CRNA GORA
SERBIA / MONTENEGRO**

AGENCIJA ZA KONTROLU LETENJA SRBIJE I CRNE GORE d.o.o. /
SERBIA AND MONTENEGRO AIR TRAFFIC SERVICES AGENCY Ltd.
SLUŽBA VAZDUHOPLOVNOG INFORMISANJA / AERONAUTICAL INFORMATION SERVICE
Trg Nikole Pašića 10 11000 Beograd Serbia AFS: LYBBYOYX
TEL: + 381 11 321 8050 321 8051 FAX: + 381 11 324 0456 e-mail: ais@smatsa.rs

AIRAC AIP
SUP 3/11
3 NOV

Stupa na snagu / Effective Date
15 DEC 11

**AD BEOGRAD/BATAJNICA – PRIVREMENI POSTUPCI
BEOGRAD/BATAJNICA AD – TEMPORARY PROCEDURES**

Ovaj AIRAC AIP SUP sadrži privremene postupke za standardne instrumentalne dolaske, instrumentalno prilaženje i standardne instrumentalne odlaske za AD BEOGRAD/Batajnica.

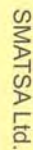
Privremeni postupci su na snazi zbog neispravnosti VOR BEO.

This AIRAC AIP SUP contains temporary STAR, instrument approach and SID procedures for BEOGRAD/Batajnica AD.

Temporary procedures are effective due to VOR BEO unserviceability.

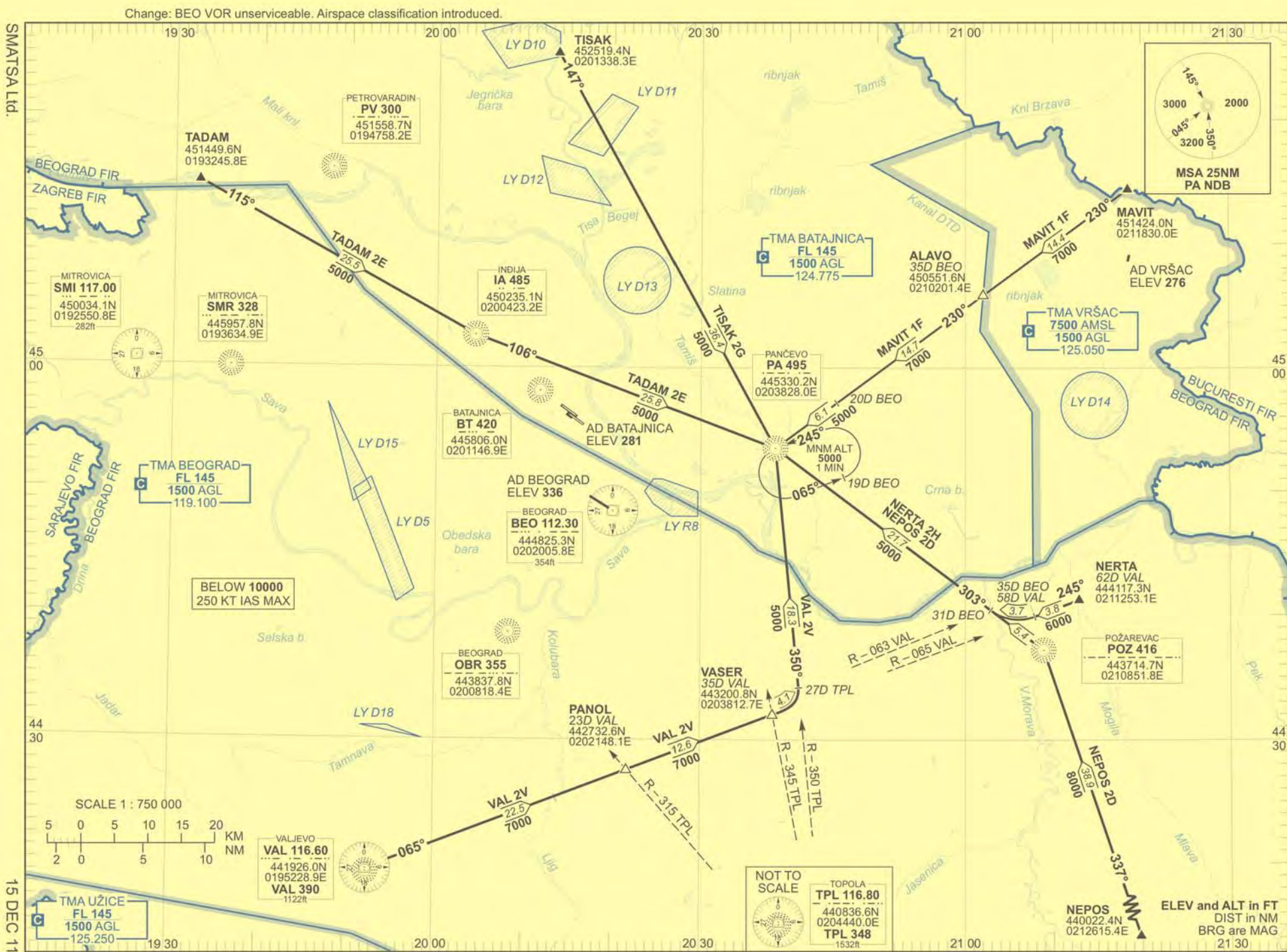
REF: AIP Serbia / Montenegro

AD 2 LYBT 5.1–1, AD 2 LYBT 5.1–5, AD 2 LYBT 6.2– 1, AD 2 LYBT 6.5–1, AD 2 LYBT 6.5–3,
AD 2 LYBT 8.1–1, AD 2 LYBT 8.1–2, AD 2 LYBT 8.1–5, AD 2 LYBT 8.1–6



Change: BEO VOR unserviceable. Airspace classification introduced.

BEOGRAD/
Batajnica
RWY 30R

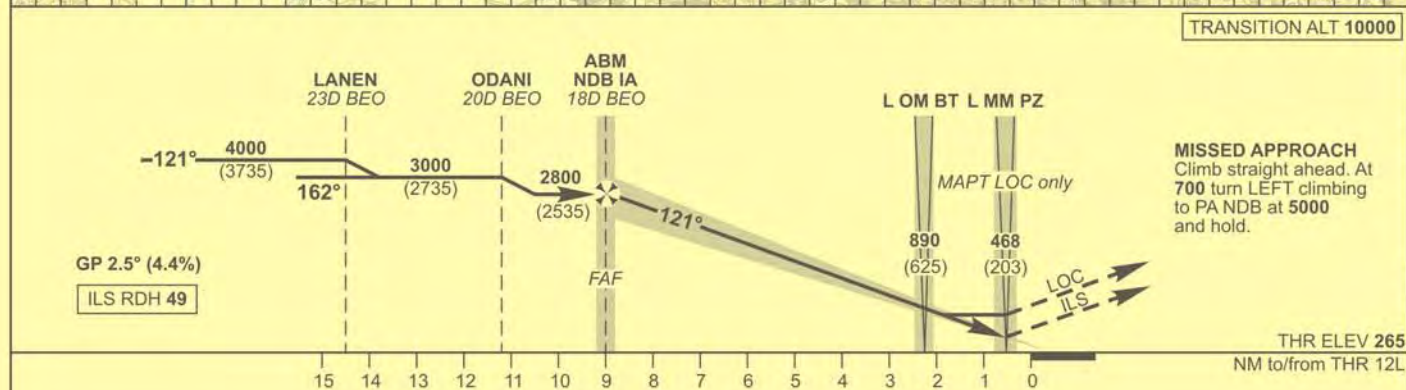
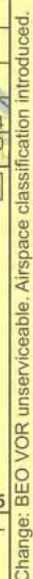


VAR 4° E (2010)

AD ELEV 281
HEIGHTS RELATED
TO THR 12L ELEV 265

| | |
|-----|---------|
| APP | 124.775 |
| TWR | 124.775 |

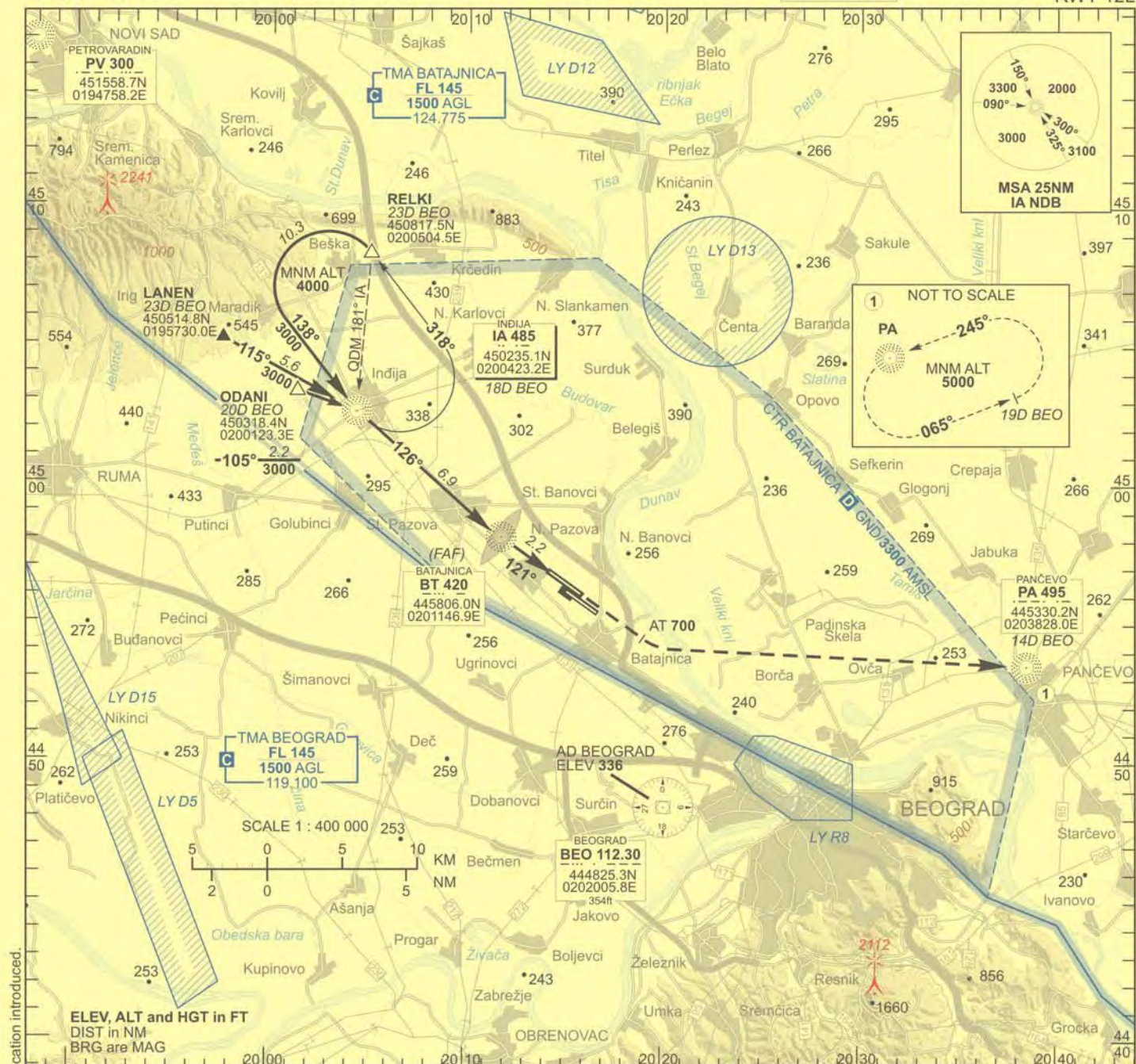
BEOGRAD/
Batajnica
ILS
RWY 12L



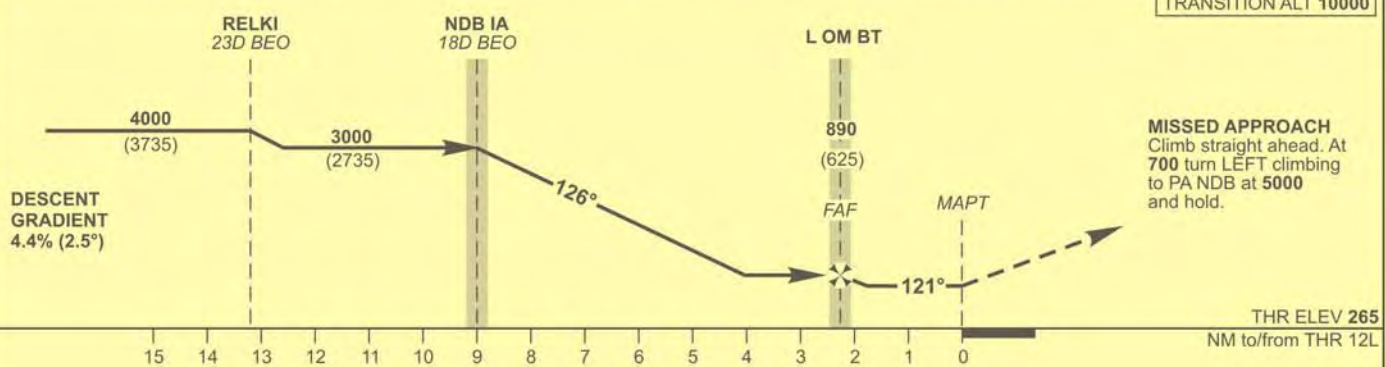
| OCA (H) | | A | B | C | D | GS | KT | 70 | 100 | 120 | 140 | 160 | 180 | 200 |
|-----------------------|----------|-----------|-----------|-----------|-----------|--------------------------------|-----|-----|-----|-----|-----|-----|-----|-----|
| Straight-in Approach | ILS | 465 (200) | | | | Rate of descent | FPM | 311 | 442 | 530 | 621 | 717 | 800 | 851 |
| | LOC only | 530 (265) | | | | | | | | | | | | |
| * Circling to RWY 30R | | 680 (399) | 780 (499) | 870 (589) | 970 (689) | * Circling SW of aerodrome NA. | | | | | | | | |

INSTRUMENT
APPROACH
CHART – ICAO

VAR 4° E (2010)

AD ELEV 281
HEIGHTS RELATED
TO THR 12L ELEV 265APP 124.775
TWR 124.775BEOGRAD/
Batajnica
NDB
RWY 12L

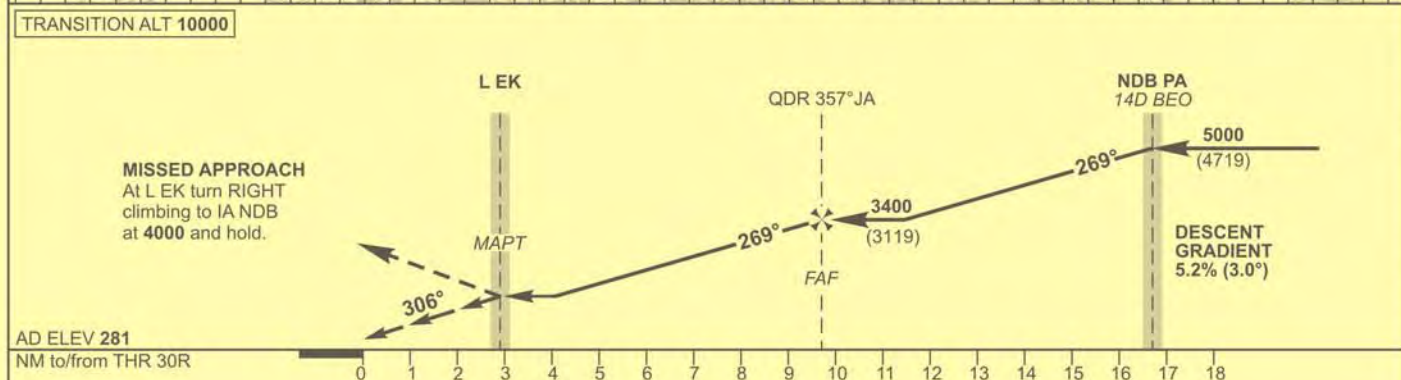
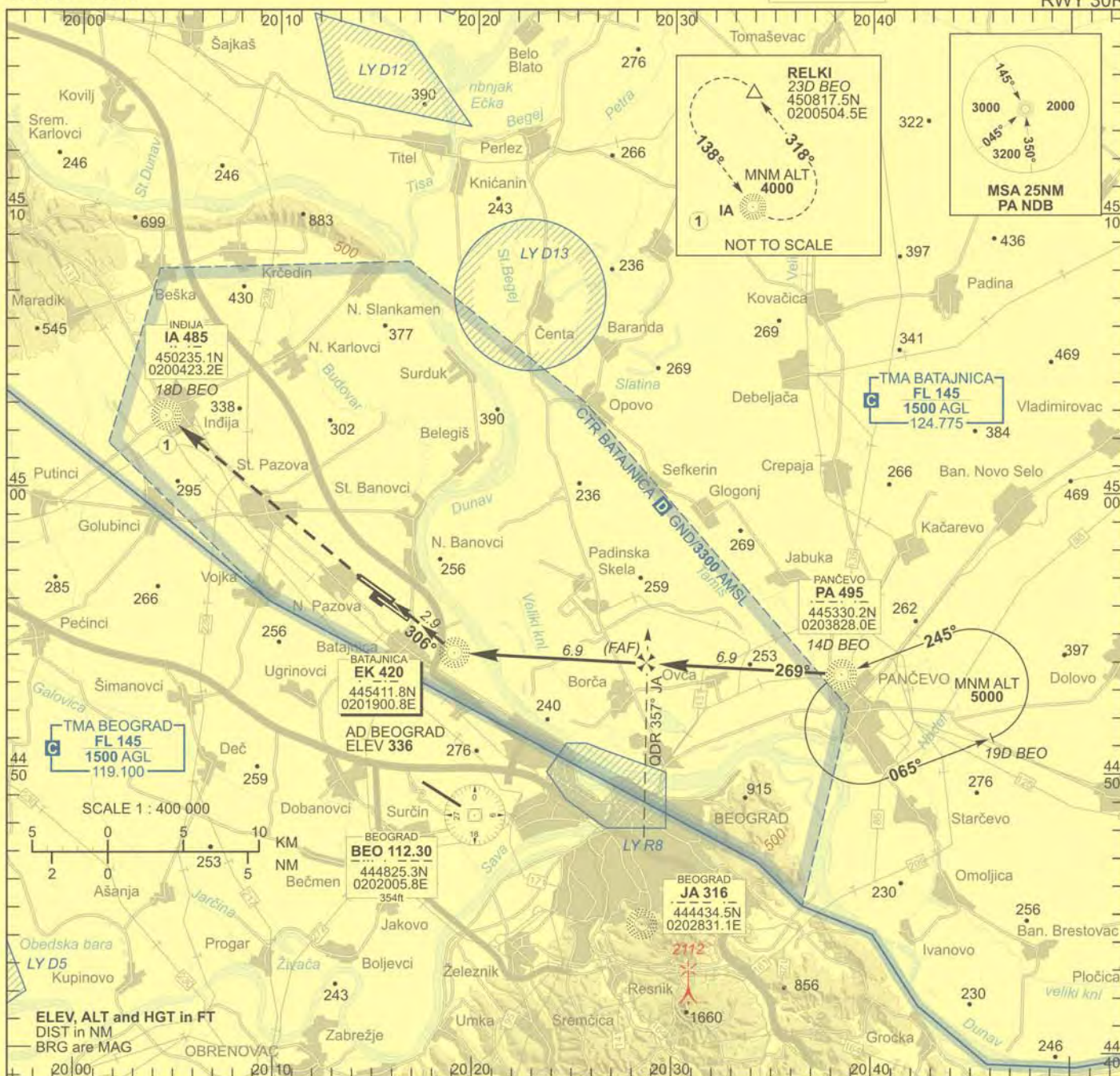
Change: BEO VOR unserviceable. Airspace classification introduced.



| OCA (H) | A | B | C | D | GS | KT | 70 | 100 | 120 | 140 | 160 | 180 | 200 |
|-----------------------|-----------|-----------|-----------|-----------|--------------------------------|-------|------|------|------|------|------|------|------|
| Straight-in Approach | 640 (374) | | | | L BT to MAPT 2.2NM | min:s | 1:53 | 1:19 | 1:06 | 0:56 | 0:49 | 0:44 | 0:39 |
| | | | | | Rate of descent | FPM | 311 | 442 | 530 | 621 | 717 | 800 | 851 |
| * Circling to RWY 30R | 680 (399) | 780 (499) | 870 (589) | 970 (689) | * Circling SW of aerodrome NA. | | | | | | | | |

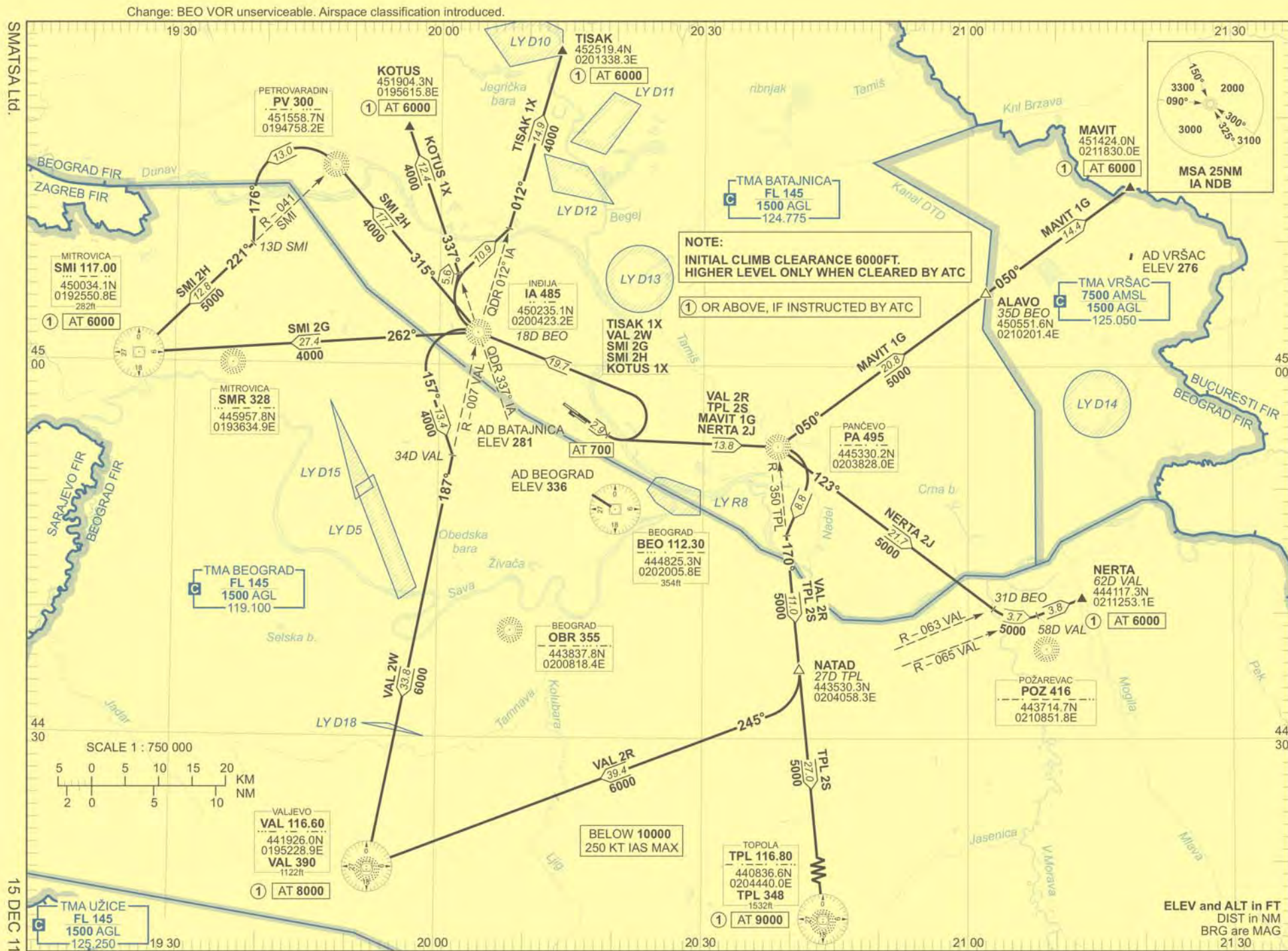
INSTRUMENT
APPROACH
CHART – ICAO

VAR 4° E (2010)

AD ELEV 281
HEIGHTS RELATED
TO AD ELEV 281APP 124.775
TWR 124.775BEOGRAD/
Batajnica
NDB
RWY 30R

| OCA (H) | A | B | C | D | GS | KT | 70 | 100 | 120 | 140 | 160 | 180 | 200 |
|----------------------|-----------|-----------|-----------|-----------|-----------------|-----|-----|-----|-----|-----|-----|-----|------|
| Straight-in Approach | | | | | Rate of descent | FPM | 371 | 530 | 636 | 742 | 848 | 954 | 1060 |
| | | | | | MAPT at L EK | | | | | | | | |
| Visual manoeuvring | 680 (399) | 780 (499) | 870 (589) | 970 (689) | | | | | | | | | |

BEOGRAD/
Batajnica
RWY 12L

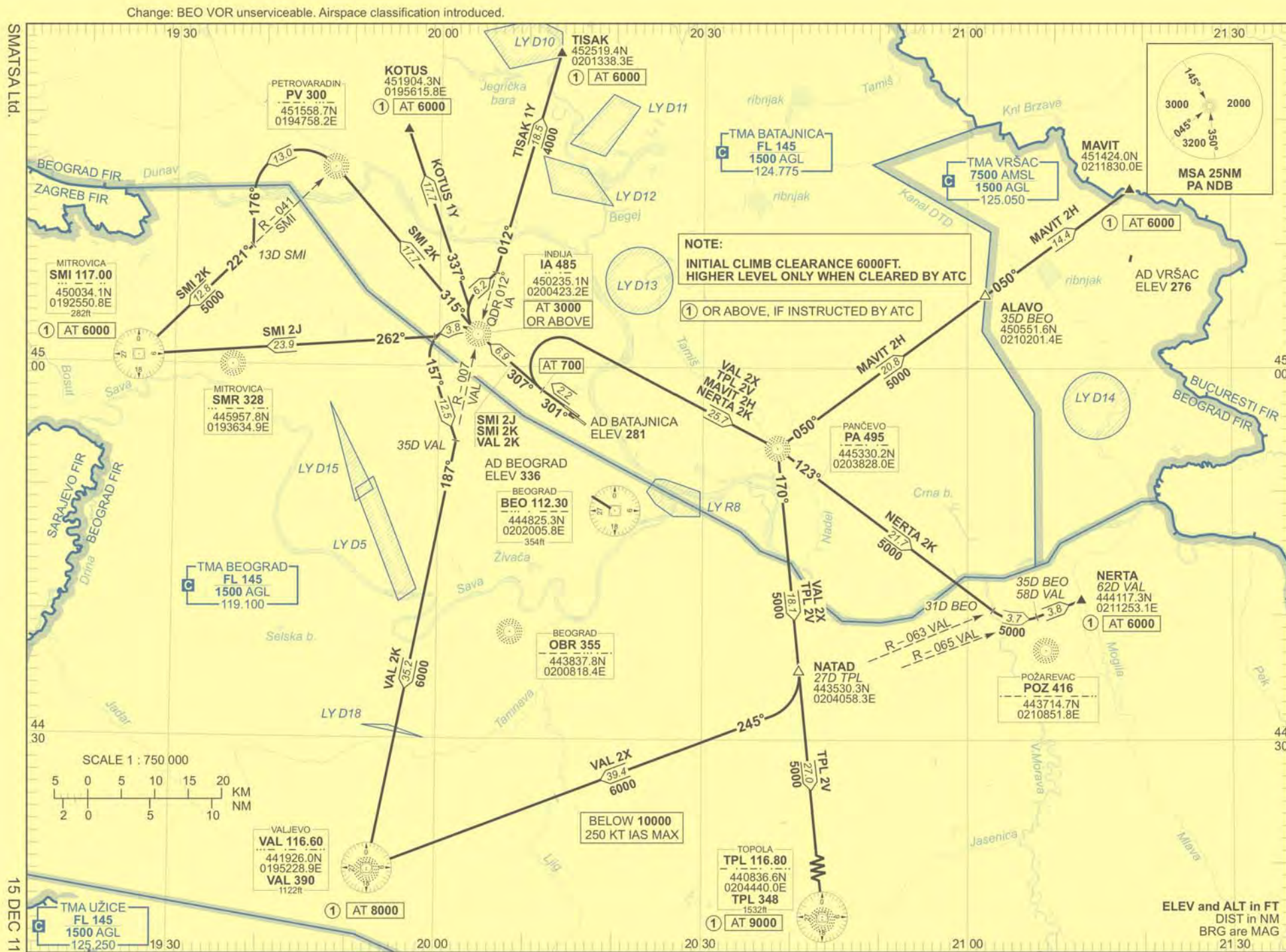


RWY 12L DEPARTURES

Note: initial climb clearance 6000FT. Higher level only when cleared by ATC.

| <i>SID designator</i> | <i>Lateral</i> | <i>Vertical</i> |
|--|--|---|
| MAVIT 1G (MAVIT ONE GOLF) | Climb straight ahead. At 700FT turn LEFT inbound PA NDB. At PA NDB turn LEFT onto PA QDR 050° climbing to MAVIT. | MAVIT at 6000FT (or above, if instructed by ATC). |
| NERTA 2J (NERTA TWO JULIETT) | Climb straight ahead. At 700FT turn LEFT inbound PA NDB. At PA NDB turn RIGHT onto POZ QDM 123° inbound POZ NDB. At 31D BEO (VAL R-063) turn LEFT intercept and follow VAL R-065 climbing to NERTA. | NERTA at 6000FT (or above, if instructed by ATC). |
| TPL 2S (TOPOLA TWO SIERRA) | Climb straight ahead. At 700FT turn LEFT inbound PA NDB. At PA NDB turn RIGHT intercept and follow TPL R-350 climbing to TPL VOR DME. | TPL VOR DME at 9000FT (or above, if instructed by ATC). |
| VAL 2R (VALJEVO TWO ROMEO) | Climb straight ahead. At 700FT turn LEFT inbound PA NDB. At PA NDB turn RIGHT intercept and follow TPL R-350. At NATAD turn RIGHT intercept and follow VAL R-065 climbing to VAL VOR DME. | VAL VOR DME at 8000FT (or above, if instructed by ATC). |
| VAL 2W (VALJEVO TWO WHISKEY) | Climb straight ahead. At 700FT turn LEFT inbound IA NDB. At IA NDB turn LEFT onto course 157°. At 34D VAL turn RIGHT intercept and follow VAL R-007 climbing to VAL VOR DME. | VAL VOR DME at 8000FT (or above, if instructed by ATC). |
| SMI 2G (MITROVICA TWO GOLF) | Climb straight ahead. At 700FT turn LEFT inbound IA NDB. At IA NDB turn LEFT intercept and follow SMI R-082 climbing to SMI VOR DME. | SMI VOR DME at 6000FT (or above, if instructed by ATC). |
| SMI 2H (MITROVICA TWO HOTEL) | Climb straight ahead. At 700FT turn LEFT inbound IA NDB. At IA NDB turn RIGHT proceed onto PV QDM 315° inbound PV NDB. At PV NDB turn LEFT onto course 176°. At 13D SMI turn RIGHT intercept and follow SMI R-041 climbing to SMI VOR DME. | SMI VOR DME at 6000FT (or above, if instructed by ATC). |
| KOTUS 1X (KOTUS ONE XRAY) | Climb straight ahead. At 700FT turn LEFT inbound IA NDB. At IA NDB turn RIGHT onto IA QDR 337° climbing to KOTUS. | KOTUS at 6000FT (or above, if instructed by ATC). |
| TISAK 1X (TISAK ONE XRAY) | Climb straight ahead. At 700FT turn LEFT inbound IA NDB. At IA NDB turn RIGHT onto IA QDR 012° climbing to TISAK. | TISAK at 6000FT (or above, if instructed by ATC). |

BEOGRAD/
Batajnica
RWY 30R



RWY 30R DEPARTURES

Note: initial climb clearance 6000FT. Higher level only when cleared by ATC.

| <i>SID designator</i> | <i>Lateral</i> | <i>Vertical</i> |
|--|---|--|
| MAVIT 2H (MAVIT TWO HOTEL) | Climb straight ahead. At 700FT turn RIGHT inbound PA NDB. At PA NDB turn LEFT onto PA QDR 050° climbing to MAVIT. | MAVIT at 6000FT (or above, if instructed by ATC). |
| NERTA 2K (NERTA TWO KILO) | Climb straight ahead. At 700FT turn RIGHT inbound PA NDB. Cross PA NDB, proceed onto POZ QDM 123° inbound POZ NDB. At 31D BEO (VAL R-063) turn LEFT intercept and follow VAL R-065 climbing to NERTA. | NERTA at 6000FT (or above, if instructed by ATC). |
| TPL 2V (TOPOLA TWO VICTOR) | Climb straight ahead. At 700FT turn RIGHT inbound PA NDB. At PA NDB turn RIGHT intercept and follow TPL R-350 climbing to TPL VOR DME. | TPL VOR DME at 9000FT (or above, if instructed by ATC). |
| VAL 2K (VALJEVO TWO KILO) | Climb straight ahead inbound IA NDB. At IA NDB turn LEFT onto course 157°. At 35D VAL turn RIGHT intercept and follow VAL R-007 climbing to VAL VOR DME. | IA NDB at 3000FT or above; VAL VOR DME at 8000FT (or above, if instructed by ATC). |
| VAL 2X (VALJEVO TWO X-RAY) | Climb straight ahead. At 700FT turn RIGHT inbound PA NDB. At PA NDB turn RIGHT intercept and follow TPL R-350. At NATAD turn RIGHT intercept and follow VAL R-065 climbing to VAL VOR DME. | VAL VOR DME at 8000FT (or above, if instructed by ATC). |
| SMI 2J (MITROVICA TWO JULIETT) | Climb straight ahead inbound IA NDB. At IA NDB turn LEFT intercept and follow SMI R-082 climbing to SMI VOR DME. | IA NDB at 3000FT or above; SMI VOR DME at 6000FT (or above, if instructed by ATC). |
| SMI 2K (MITROVICA TWO KILO) | Climb straight ahead inbound IA NDB. Cross IA NDB, proceed onto PV QDM 315° inbound PV NDB. At PV NDB turn LEFT onto course 176°. At 13D SMI turn RIGHT intercept and follow SMI R-041 climbing to SMI VOR DME. | IA NDB at 3000FT or above; SMI VOR DME at 6000FT (or above, if instructed by ATC). |
| KOTUS 1Y (KOTUS ONE YANKEE) | Climb straight ahead inbound IA NDB. At IA NDB turn RIGHT onto IA QDR 337° climbing to KOTUS. | KOTUS at 6000FT (or above, if instructed by ATC). |
| TISAK 1Y (TISAK ONE YANKEE) | Climb straight ahead inbound IA NDB. At IA NDB turn RIGHT onto IA QDR 012° climbing to TISAK. | TISAK at 6000FT (or above, if instructed by ATC). |