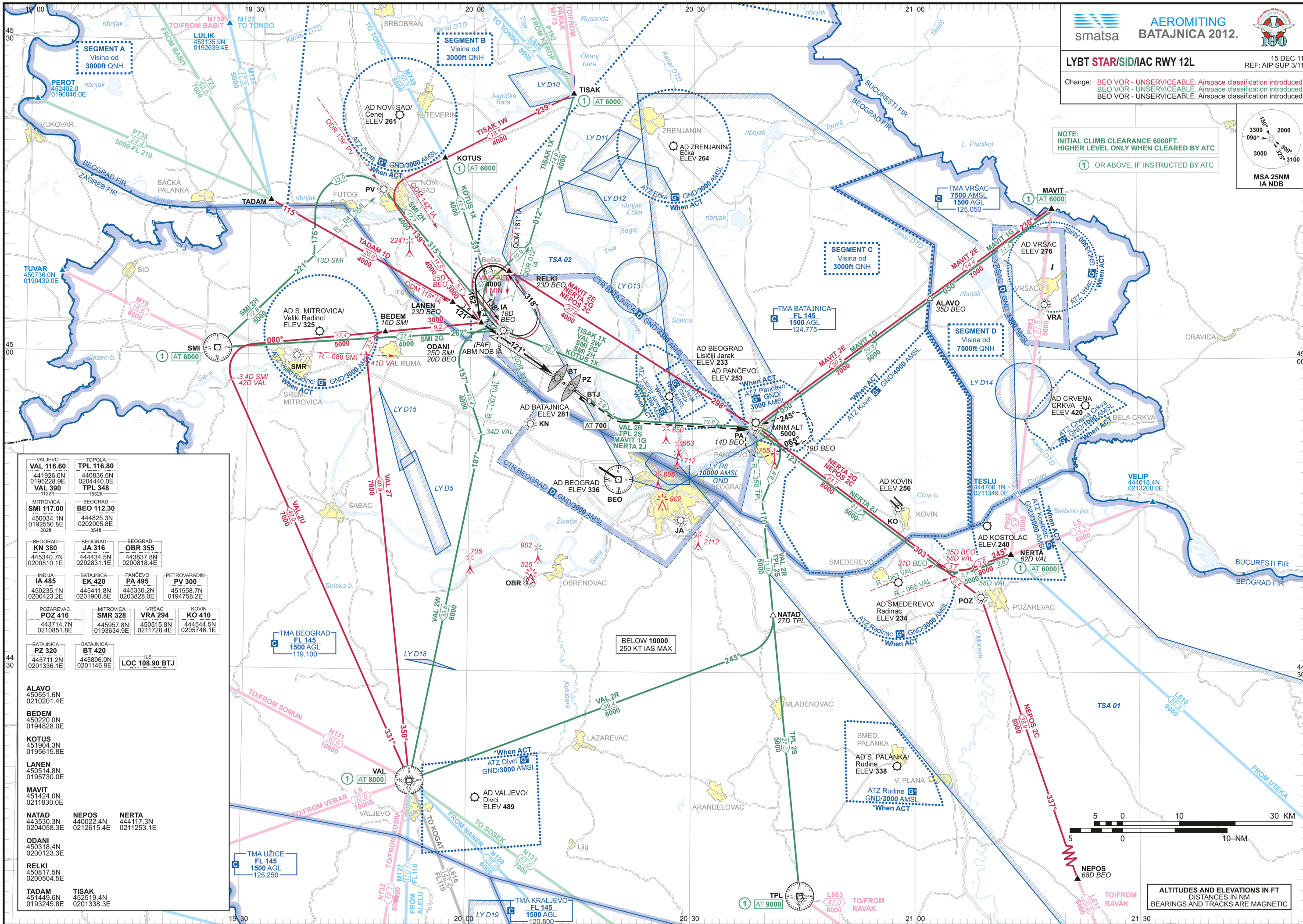
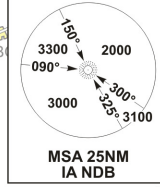


Change: BEO VOR - UNSERVICEABLE. Airspace classification introduced.
BEO VOR - UNSERVICEABLE. Airspace classification introduced.
BEO VOR - UNSERVICEABLE. Airspace classification introduced.

NOTE: INITIAL CLIMB CLEARANCE 6000FT.
HIGHER LEVEL ONLY WHEN CLEARED BY ATC
① OR ABOVE, IF INSTRUCTED BY ATC



VALJEVO VAL 116.60 441926.0N 0195228.9E VAL 390 115221	TOPOLA TPL 116.80 440836.6N 0204440.0E TPL 348 153211
MITROVICA SMI 117.00 450034.1N 0192550.8E 28211	BEOGRAD BEO 112.30 444825.3N 0202005.8E 35411
BEOGRAD KN 380 445340.7N 0200810.1E	BEOGRAD JA 316 444434.5N 0202831.1E
BEOGRAD OBR 355 443837.8N 0200818.4E	BEOGRAD PA 495 445330.2N 0203826.0E
INDIA IA 485 450235.1N 0200423.2E	BATAJNICA EK 420 445411.8N 0201900.8E
POZAREVAC POZ 416 443714.7N 0210851.8E	MITROVICA SMR 328 445957.8N 0193634.9E
BATAJNICA PZ 320 445711.2N 0201336.1E	VRŠAC VRA 294 450515.8N 0211728.4E
ALAVO 450551.6N 0210201.4E	KOVIN KO 410 445444.5N 0205746.1E
BEDEM 450220.0N 0194828.0E	POZAREVAC POZ 416 443714.7N 0210851.8E
KOTUS 451904.3N 0195615.8E	MITROVICA SMR 328 445957.8N 0193634.9E
LANEN 450514.8N 0195730.0E	VRŠAC VRA 294 450515.8N 0211728.4E
MAVIT 451424.0N 0211830.0E	KOVIN KO 410 445444.5N 0205746.1E
NATAD 443530.3N 0204058.3E	POZAREVAC POZ 416 443714.7N 0210851.8E
NEPOS 440022.4N 0212615.4E	MITROVICA SMR 328 445957.8N 0193634.9E
NERTA 444117.3N 0211253.1E	VRŠAC VRA 294 450515.8N 0211728.4E
ODANI 450318.4N 0200123.3E	KOVIN KO 410 445444.5N 0205746.1E
RELKI 450817.5N 0200504.5E	POZAREVAC POZ 416 443714.7N 0210851.8E
TADAM 451449.6N 0193245.8E	MITROVICA SMR 328 445957.8N 0193634.9E
TISAK 452519.4N 0201338.3E	VRŠAC VRA 294 450515.8N 0211728.4E

ALTITUDES AND ELEVATIONS IN FT
DISTANCES IN NM
BEARINGS AND TRACKS ARE MAGNETIC